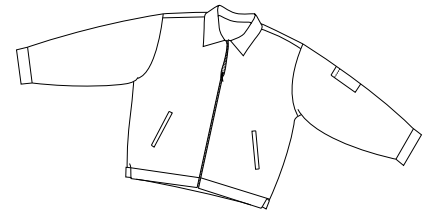
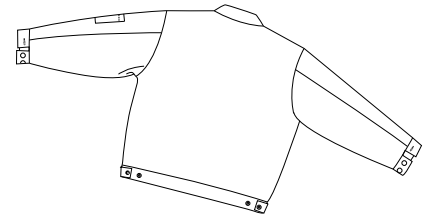


Slash Pocket Jacket

CornerStone[™]
by Port Authority®



Front



Back

CSJT22

- * 7.5-ounce * 65/35 poly/cotton * Permanently lined
- * 100% nylon taffeta quilted to a 3.3 ounce, 1/8" polyurethane foam
- * elf-fabric collar * Two lower inset slash pockets * Utility pocket on the sleeve

Care Instructions:

Machine wash cold. Do not bleach.
Tumble dry low. Remove promptly.
Cool iron if necessary.
Do not dry clean if printed.

Finished Measurements in Inches

Size	XS	S	M	L	XL	2XL	3XL	4XL	5XL	6XL
Chest	not avail	45.75	49.75	53.75	57.75	61.75	65.75	69.75	73.75	77.75
Length	not avail	26.12	26.12	27.12	27.12	28.12	28.12	29.12	28.12	30.12
Sleeve	not avail	33	34.5	35.5	36	36.5	37	37.5	39.5	40
Hem	not avail	21.5	22.5	23.5	24.5	25.5	26.5	27.5	34.75	36.25
Areas for Decoration	Left/Right Chest, Full Back			Port Pocket™			N/A			

Chest width measured 1" below arm hole. Body length measured from center back neck seam to hem.
Sleeve length measured from center back seam to hem.

Colors

 Navy

Please Note:

Colors shown are approximate and for reference only. For closest match see PMS colors, or for exact match, returnable samples and grommeted samples are available.

Color Chart

Color	Navy
Textile PMSf	19-4010TC
General PMS	532C